

Lead by example.
All-new Kia Sportage



Movement that inspires

Lead by example in the all-new, all-awesome Kia Sportage.

People can't help but watch and want to learn from you, as you and your family cruise in the all-new, 5th generation Kia Sportage.

From when it was first introduced, and through the years, the Kia Sportage has always been a pioneering vehicle, which is why it has always appealed to pioneers. Whether it be with its progressive designs, state-of-the-art technological features or world-beating driver experience and safety, the Sportage always leads.

The all-new, 5th generation Sportage does not break tradition and continues to be a leader on all the important aspects and some that most vehicle manufacturers would not even think to pay attention to.

Leading is in the Sportage's DNA - just as it's in the DNA of Sportage drivers.



* Images may show features not available in South Africa and are included for illustrative purposes. Specification varies by model. Please consult your Kia dealership to confirm all specification.

Advanced design for inspired minds.

Do you drive a Sportage because you have an inspired mind or do you have an inspired mind because you drive a Sportage? It doesn't matter. What matters is you have the presence of mind to get behind the wheel of this pioneering vehicle, with a body that has been sculpted to have a free-flowing bold and sophisticated organic form.

You appreciate the clean, powerful contours rippling along the side, highlighted by its new chrome and glossy black window surround mouldings. Accentuated by the dynamic rear spoiler, with razor-style signature LED taillights and sporty rear bumper, this is an urban SUV that connects you with your mind the way only a Sportage can.



GT-line by design. GT-line by impression.

The big city charges you up big time.

It's where you let your imagination and creativity flow. Where boldness thrives and lasting impressions linger. Just like the lasting impression of the all-new Sportage GT-line.

Take in the wide rear shoulder body shape for extra poise and presence on the road, with the swooping rear spoiler for added impact. Gaze at the razor-style signature LED taillights design. Spot the clean and refined lines. Then notice the sporty rear bumper with its clean contemporary body colour mouldings, and matt chrome skid plate. Excited? You will be.



* Images may show features not available in South Africa and are included for illustrative purposes. Specification varies by model. Please consult your Kia dealership to confirm all specification.



Refined space that sets new standards.

Sit inside the all-new Sportage and immerse yourself in an interior that delivers an outstanding experience in comfort, quality, design and cutting-edge technology. Sitting at the centre of the sporty cockpit is a beautifully sculpted curved display, integrating a 12.3" driver instrument cluster and 12.3" high-tech multimedia touchscreen with Split Screen display*. Embossed leather, suede and subtle ambient lighting creates luxurious touchpoints, with a 6-speaker sound system ensuring you're surrounded by the sounds that move you. A fully automatic dual-zone climate control system with separate controls for driver and passenger aids in creating a space that will inspire you wherever you may go.

* Images may show features not available in South Africa and are included for illustrative purposes. Specification varies by model. Please consult your Kia dealership to confirm all specification.

* Model specific. Please refer to specification sheet.

Connected technology to stay ahead.

At Kia we know connections count. Not just your connection to people. Connection to experiences. Connection to your ideas, and favourite places or destinations. Connections that inform and entertain you. Connections that keep you up to date and safe. That's why inside the all-new Kia Sportage, you'll find the very latest in seamless and effortless technology, to keep you constantly connected with everything and everyone around you when you're on the move.

Panoramic dual 12.3" curved display.

At the heart of the all-new Sportage cockpit sits a dual display touchscreen which is the focal point for all your driving, information, connection and entertainment needs.

* Only available on GT-line models.

Ambient mood light.

When creating the interior of the all-new Kia Sportage, we wanted to create a space that felt like home. That's why we've added a special ambient mood lighting system that you can customise to suit your mood when driving. Not only can you choose from a range of colours to suit your journey, but you can choose to automatically change the colour when you change drive modes, too.

* Only available on the GT-line S.

* Images may show features not available in South Africa and are included for illustrative purposes. Specification varies by model. Please consult your Kia dealership to confirm all specification.



Rear USB fast-charge ports.

Keep your rear passengers happy with a Type-C USB fast-charge port which is cleverly mounted on the rear panel of the driver and front passenger seat. Perfect for work, play or simply charging.



Wireless smartphone charger.

When you're on the move and want to keep connected, keeping your phone fully charged should be the last thing you need to worry about. The Kia Sportage comes with a smartphone wireless charging bay offering high-speed 15 W wireless charging. Just place your smartphone with Qi technology on the convenient wireless phone charger and you are always ready.

* Not available on the LX models.



Multimode control display.

Control at your fingertips. An innovative way to make the interior less cluttered and more intuitive. Easily switch between infotainment and climate control with a simple touch.

Innovation through vision.

When inspiration comes calling, the all-new Sportage is never found wanting. That's because we've created a dynamic, engaging and optimal driving experience, debuting numerous highly innovative technology breakthroughs.



* Images may show features not available in South Africa and are included for illustrative purposes. Specification varies by model. Please consult your Kia dealership to confirm all specification.



Intelligent front lighting system.

Creating a clear and distinct difference in driving vision technology. When using the LED headlamps on high beam, if the intelligent front lighting system detects another car driving in either the same direction as you or the opposite direction to you, it will automatically switch the LEDs to low beam to prevent dazzling the other driver. Then when the road is clear it will automatically switch back again.

* Only available on the GT-line S.



Rotary gear shift dial.

Located centrally and within easy reach, the rotary dial operates using shift-by-wire technology, enabling effortless gear shifting. Just as importantly from a safety perspective, it will automatically shift to the parking gear P if the driver forgets to do so.

* Only available on the GT-line S.



12.3" instrument cluster with widescreen display.

Equipped with the latest thin-film transistor liquid-crystal display for incredibly precise and clear graphics. Depending on the powertrain being used, the all-new Sportage offers a range of drive modes ranging from Eco to Sport modes. Once chosen, the different drive mode is displayed on the driver instrument panel.

* Only available on GT-line models.

DriveWise technology for all-round safety.

Keeping you, your passengers and loved ones protected constantly inspires us to put safety as a top priority in the development of the all-new Sportage. That's why every Sportage comes with Kia's acclaimed in-house developed DriveWise technology. This industry-leading system integrates a whole host of advanced features to minimise the possibility of accidents and maximise all-round protection.



Blind-Spot Collision Warning.

The Blind-Spot Collision Warning system uses a front camera and rear radar sensor to monitor your blind spots and warn you of oncoming cars with a symbol in the side-view mirror.



Care Follow Assist and Smart Cruise Control.

Care Follow Assist and Smart Cruise Control is designed for effortless driving on motorways.

It automatically maintains the Sportage distance to another vehicle in front as well as keeping it centred in its current lane on the highway. At the same time, it controls steering, acceleration and deceleration whilst you are in-lane.

* Only available on the GT-line S.



Forward Collision-Avoidance Assist. (FCA)

Evaluating both camera and radar data from your vehicle, the FCA system analyses information about other cars, pedestrians or cyclists crossing the road to avoid a potential collision with them.

* Only available on GT-line models.

FCA also functions to prevent collisions with vehicles when making a left turn at an intersection. If it detects a potential collision, a warning signal appears on your instrument cluster and maximum braking power is applied.

* FCA, with junction turning is only available on the GT-line S.

* Images may show features not available in South Africa and are included for illustrative purposes. Specification varies by model. Please consult your Kia dealership to confirm all specification.

Luxury from within.

For comfort as individual as you are, the all-new Sportage range offers the ultimate in seat materials, textures, stitching and colours. From cloth and artificial leather to premium suede and artificial leather. Or the ultimate luxury of all-leather. And when you choose the Sportage GT-line, you really can make your mark with stand-out design including GT-line emblem embossing.



GT-line artificial suede and leather

For even more luxury, upgrade to the black artificial leather seating with quilted design across the width of the seat cushion and backrest together with suede bolster combination. With contrasting white stitching and white piping plus an embossed GT-line logo. To complement the package, there are soft touch upper trims on the doors, as well as suede door centre panels and artificial leather door armrests. Black roof lining come as standard.



LX Black cloth

The standard LX grade features black fabric seat and bolster upholstery with black stitching. Comes with grey roof lining.



EX Combination cloth and artificial leather

The black cloth and artificial leather trim seats feature black stitching for added looks. Comes with soft touch upper trims on the doors, artificial leather door armrest trim, optionally artificial leather door centre panels and grey roof lining.



Colour for character with style.

Dynamic or distinctive. Sporty or subtle. Loud or luxurious.
With so many colours on offer, the choice is yours to enjoy.



Tricoat White Pearl



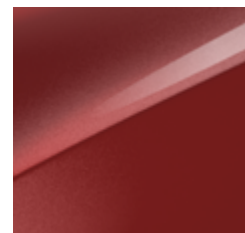
Cassa White



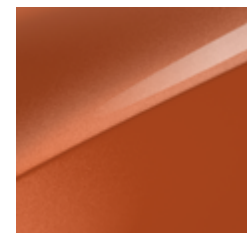
Experience Green



Black Pearl



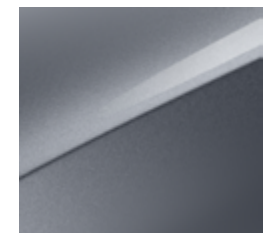
Infra Red Metallic



Orange Fusion



Splash Lemon



Lunar Silver



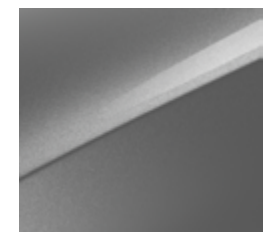
Blue Frame



Dark Penta Metal



Yuka Steel Grey
*(LX and EX models only)



Sparkling Silver
*(LX and EX models only)

* Images may show features not available in South Africa and are included for illustrative purposes.
Specification varies by model. Please consult your Kia dealership to confirm all specification.



Set the pace in your way.

Every Sportage is designed down to the last detail, and that includes sleek, sporty and truly impressive wheels. The all-new Sportage leads the way with alloy wheel designs.



17" (Sportage LX)



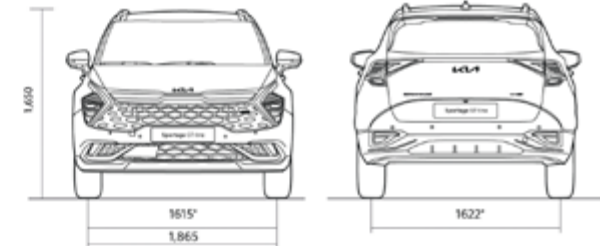
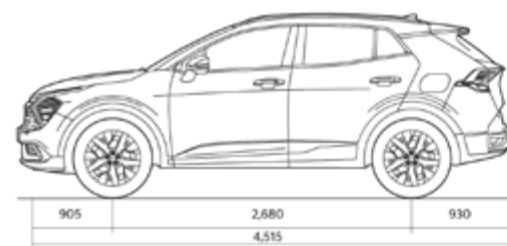
18" (Sportage EX and Sportage GT-line)



19" (Sportage GT-line Plus and GT-line S)

* Images may show features not available in South Africa and are included for illustrative purposes. Specification varies by model. Please consult your Kia dealership to confirm all specification.

STANDARD SPECIFICATIONS					
SPORTAGE	1.6 T-GDI LX	1.6 T-GDI EX	1.6 T-GDI GT-line	1.6 T-GDI GT-line Plus	1.6D T-GDI GT-line S
DRIVE TYPE	2WD				
TRANSMISSION	7-Speed DCT				
DIMENSIONS					
Overall Dimensions (length x width x height) (mm)	4515 x 1865 x 1650				
Wheelbase (mm)	2680				
Overhang (front/rear) (mm)	905 / 930				
Minimum Ground clearance (mm)	170				
Wheel tread (front/rear) (mm)	1630/1637	1615/1622			
TECHNICAL SPECIFICATIONS					
Engine Type	1.6 Turbo				
Displacement (cc)	1 598				
Valve system	*Intake and Exhaust CVVT 16V Swing Arms with Hydraulic Lash Adjuster*				
Maximum Power (kW/ r/min)	132kW / 5500 rpm				
Maximum Torque (Nm/r/min)	265Nm / 1500-4500 rpm				
Compression ratio	10.5				
Bore x stroke (mm)	75.6 x 89				
Fuel Injection System	Gasoline direct injection (GDI)				
Fuel Type	Petrol				
PERFORMANCE					
Acceleration (0-100km/h)	8.8				
Maximum Speed (km/h)	201				
CO2 emissions (g/km) - Combined Cycle (MT/AT)	149				
CAPACITIES					
Curb Weight (max kg) 2WD/AWD	1497				
Gross Vehicle Mass (GVM) (kg) 2WD/AWD	2115				
Tow mass (kg) - Braked / Unbraked	1650/750				
Fuel Tank Capacity (l)	54				
Cargo space (l) (VDA 1st/3rd row)	591/1780				
Cargo Opening (mm)	1091 / 744				
Lift-over Height (mm)	727				
STEERING					
Type	Motor-driven power steering				
Steering operation: VGR(variable gear ratio rack)	13.7 (@360°)				
Minimum Turning Radius (m)	5.46 ± 0.2				
BRAKES					
Front brakes	Ventilated disc (325mm)				
Rear brakes	Solid disc (300mm)				
SUSPENSION					
Front	Macpherson strut type				
Rear	Multi link type				
SAFETY, SECURITY & DRIVER ASSISTANCE SYSTEMS					
Anti-lock braking system (ABS)	X				
Electric stability control (ESC)	X				
Downhill brake control (DBC)	X				
Hill-start assist control (HAC)	X				
Trailer stability assist (TSA)	X				
Number of airbags	6				
Airbag location	Driver, passenger, side and curtain				
Central locking with alarm and immobiliser	X				
Seat belt height adjustment	X				
Data dot	X				
Electronic brake-force distribution (EBD)	X				
Electric parking brake with auto hold function (EPB)	X				
Isofix (child anchors)	X				
Child lock - manual	X				
Rheostat	X				
Smart entry with push button start	X				
WHEELS & TYRES					
Wheels	17"	18"	19"		
Tyres	215/65 R17	235/55R18	235/50R19		
Spare wheel - Full Size Alloy	X				
WARRANTY & SERVICE PLAN					
Warranty	5-year / Unlimited Kilometre				
Service Plan	6-year / 90 000 for all models				
Roadside Assistance	5-year / Unlimited Kilometre				



STANDARD SPECIFICATIONS					
FEATURES	1.6 T-GDI LX	1.6 T-GDI EX	1.6 T-GDI GT-line	1.6 T-GDI GT-line Plus	1.6D T-GDI GT-line S
Shock absorber front and rear - advanced valve	X	X	X	X	X
Parking assist sensors	Rear	Front and Rear	Front and Rear	Front and Rear	Front and Rear
Steering adjustment - tilt and telescopic	X	X	X	X	X
Motor driven power steering	X	X	X	X	X
Front and rear disc brakes	X	X	X	X	X
Mud guards	X	X	X	X	X
LED head lamps	X	X	X	X	X
Automatic light control	X	X	X	X	X
LED daytime running lights	X	X	X	X	X
Rear spoiler with high mounted stop light (LED)	X	X	X	X	X
Front fog lamps (LED)	X	X	X	X	X
Rear fog lamp	X	X	X	X	X
Side repeater lamp - outside mirror	X	X	X	X	X
Rear combination lamp - LED + bulb	X	X	-	-	-
Rear combination lamp - LED	-	-	X	X	X
Rain sensing wipers	X	X	X	X	X
Electric mirror adjustment	X	X	X	X	X
Electric folding mirror	X	X	X	X	X
Back lite glass - heated with timer	X	X	X	X	X
Roof rack	X	X	X	X	X
Outside handle - body color	X	X	X	X	X
Door garnish - silver paint	X	X	X	X	X
Beltline - satin finish	X	X	X	X	X
Skid plate - silver paint	X	X	X	X	X
Driver heights adjustment	X	X	X	X	X
Lumbar support - driver (2 Way Electric)	X	X	X	X	X
2nd row rear seat split : 40:20:40	X	X	X	X	X
Cup holder at center armrest	X	X	X	X	X
Seat back pocket - driver and passenger	X	X	X	X	X
Overhead console lamp	X	X	X	X	X
2nd row roomlamp	X	X	X	X	X
Luggage lamp	X	X	X	X	X
Electric window control with driver/passenger auto function and safety	X	X	X	X	X
Artificial leather steering and gear knob	X	X	X	X	X
Illuminated sunvisor with vanity mirror - driver and passenger	X	X	X	X	X
Luggage screen	X	X	X	X	X
Speakers	6	6	6	6	6
Front USB port	X	X	X	X	X
Remote steering control	X	X	X	X	X
Bluetooth connectivity w/voice recognition	X	X	X	X	X
12.3" AV infotainment system	X	X	X	X	X
Digital 12" TFT intergrated LCD cluster display	-	-	X	X	X
Apple carplay and android auto	X	X	X	X	X
Digital 4" TFT intergrated LCD cluster	X	X	-	-	-
Electrochromatic mirror	X	X	X	X	X
Cruise control	X	X	X	X	X
Drive mode select	X	X	X	X	X
Blind spot collision warning	X	X	X	X	X
Rear view camera	X	X	X	X	X
USB charger for rear occupants	2	2	2	2	2
Automatic temperature control (dual)	X	X	X	X	X
Rear ventilation duct	X	X	X	X	X
Auto window defogger	X	X	X	X	X
Seat material	Cloth	Cloth/Artificial Leather	Artificial Leather/Suede	Artificial Leather/Suede	Artificial Leather/Suede
Rear privacy glass	-	X	X	X	X
Remote folding rear seats	-	X	X	X	X
Electric front seats	-	X	X	X	X
Driver memory seat	-	X	X	X	X
Front and rear heated seats	-	X	X	X	X
Heated steering wheel	-	X	X	X	X
Wireless charger	-	X	X	X	X
Glossy black grille	-	X	X	X	X
Artificial leather covered armrest and centre trim	-	X	X	X	X
Front collision avoidance assist - Car/Ped/Cyc	-	-	X	X	X
Lane follow assist	-	-	X	X	X
Lane keeping assist - warning	-	-	X	X	X
Paddle gear shift	-	-	X	X	X
Alloy pedals	-	-	X	X	X
Power tailgate	-	-	X	X	X
Deluxe scuff plates	-	-	X	X	X
Panoramic sunroof	-	-	-	X	X
LED room/luggage and personal lamps	-	-	-	X	X
E-Shift by wire	-	-	-	-	X
Dual LED lamps (high and low projection) with adaptive driving beam	-	-	-	-	X
Passenger walk in device	-	-	-	-	X
Ventilated front seats	-	-	-	-	X
Mood lamp	-	-	-	-	X
Smart cruise control	-	-	-	-	X
Front collision avoidance assist with junction turning	-	-	-	-	X